

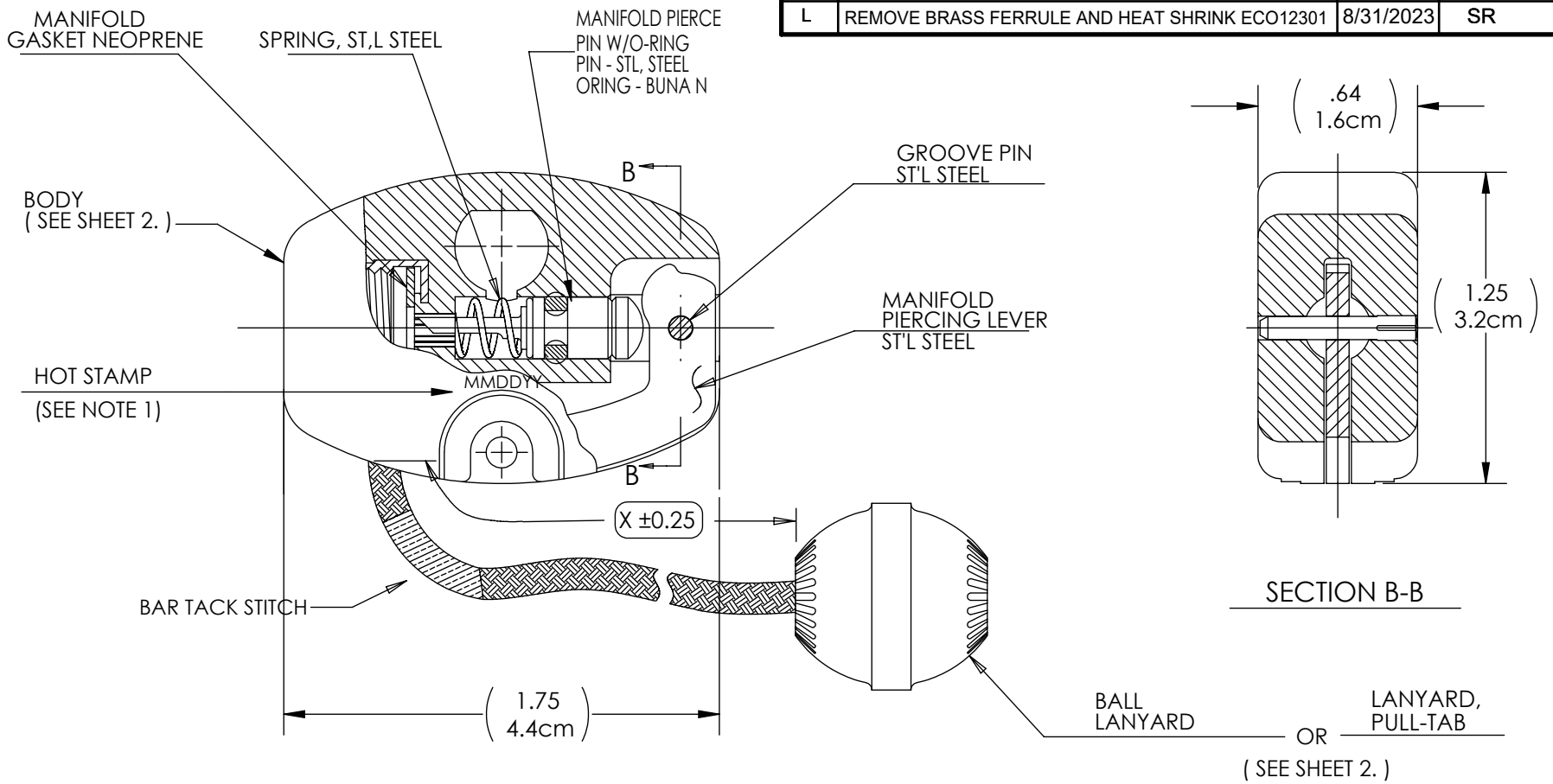
DRAWING NO.
C840AMUXXXX

REV
L

Customer Drawing

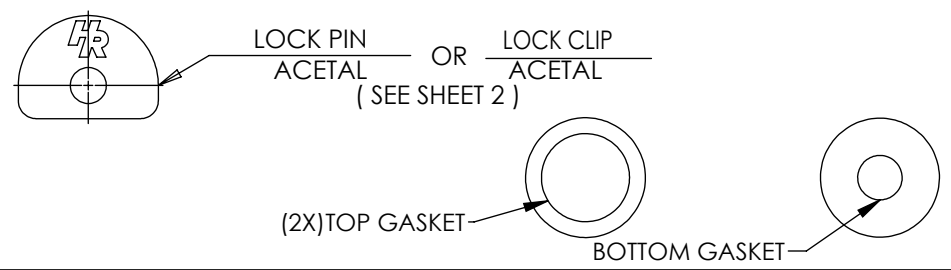
REVISION HISTORY

REV	DESCRIPTION (ECO)	DATE	APPROVED
K	ADD SUFFIX 3" CORD LENGTH. ECO 8657	06/21/19	AK
L	REMOVE BRASS FERRULE AND HEAT SHRINK ECO12301	8/31/2023	SR



NOTES:

1. MM- MONTH
DD- DAY
YY- YEAR
2. PIN, LABEL, AND GASKET PACKED SEPERATELY.
3. CRITICAL DIMENSIONS ARE CIRCLED AND SUBJECT TO INSPECTION.
4. DIMENSIONS IN PARENTHESES ARE FOR REFERENCE ONLY.
5. ALL DIMENSIONS ARE IN INCHES, WITH NOMINAL DIMENSION IN METRIC.
6. SEE SHEET 2 FOR SUFFIX "X" OPTIONS.



MOLDED PARTS:
GATES, PARTING LINES, AND FLASH PER QUALITY CRITERIA

PROPRIETARY AND CONFIDENTIAL
THE INFORMATION CONTAINED IN THIS DRAWING IS SOLE PROPERTY OF HALKEY-ROBERTS CORPORATION ST. PETERSBURG, FL. ANY REPRODUCTION IN PART OR AS A WHOLE WITHOUT THE WRITTEN PERMISSION OF HALKEY-ROBERTS CORPORATION IS PROHIBITED.

DRAWN BY	M.S.	DATE	06-27-96
APPROVED BY	L.F.	DATE	6-27-96
MATERIAL	N/A		
FINISH	N/A		
UNLESS OTHERWISE SPECIFIED: DIMENSIONS ARE IN INCHES TOLERANCES: ANGULAR: ± 1° TWO PLACE DECIMAL ± .01 THREE PLACE DECIMAL ± .005			
THIRD ANGLE PROJECTION			

HR® Halkey-Roberts®			
TITLE INFLATOR ASSEMBLY			
SIZE A	DRAWING NO. C840AMUXXXX	REV L	
SCALE 1:1	DO NOT SCALE DRAWING		SHEET 1 OF 2

PART NO. 840AMUXXXX

FIRST SUFFIX "X" INDICATES:
NONE - 3/8" TH'D
L - 1/2" TH'D

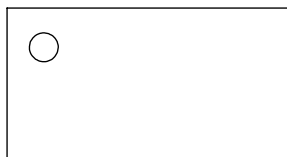
FOURTH SUFFIX "X" INDICATES CORD LENGTH:

SECOND SUFFIX "X" INDICATES:

COLOR		DESCRIPTION	LABEL
RED	YELLOW		
B	YB	BALL	840AMU LABEL
2B	Y2B	2BALLS	840AMU LABEL
3B	Y3B	3BALLS	840AMU LABEL
E	YE	ENGLISH TAB	840AMU LABEL
D	YD	DANISH - ENGLISH TAB	840AMU LABEL
F	YF	FRENCH - ENGLISH TAB	840AMU LABEL F
G	YG	GERMAN - ENGLISH TAB	840AMU LABEL
I	YI	ITALIAN - ENGLISH TAB	840AMU LABEL
J	YJ	JAPANESE - ENGLISH TAB	840AMU LABEL
S	YS	SPANISH - ENGLISH TAB	840AMU LABEL
NONE	-	NO BALL, OR TAB, ON LANYARD	840AMU LABEL F

SUFFIX	X-CORD Lg.	
	Inches	Centimeters
3	3.0	(7.6cm)
4	4.0	(10.2cm)
45	4.5	(11.4cm)
5	5.0	(12.7cm)
55	5.5	(14.0cm)
6	6.0	(15.2cm)
7	7.0	(17.8cm)
75	7.5	(19.0cm)
8	8.0	(20.3cm)
85	8.5	(21.6cm)
9	9.0	(22.9cm)
95	9.5	(24.1cm)
100	10.0	(25.4cm)
135	13.5	(34.3 cm)

THIRD SUFFIX "X" INDICATES:
P - LOCK PIN, RED PAD PRINT
C - CLIP, NO RED PAD PRINT



LABEL, (SEE NOTE 2.)

DRAWN BY M.S.		DATE 06-27-96	HR® Halkey-Roberts®	
APPROVED BY L.F.		DATE 6-27-96		
MATERIAL N/A		FINISH N/A		TITLE INFLATOR ASSEMBLY
UNLESS OTHERWISE SPECIFIED: DIMENSIONS ARE IN INCHES TOLERANCES: ANGULAR: ± 1° TWO PLACE DECIMAL ± .01 THREE PLACE DECIMAL ± .005		THIRD ANGLE PROJECTION 		
MOLDED PARTS: GATES, PARTING LINES, AND FLASH PER QUALITY CRITERIA		SIZE A	DRAWING NO. C840AMUXXXX	REV L
PROPRIETARY AND CONFIDENTIAL THE INFORMATION CONTAINED IN THIS DRAWING IS SOLE PROPERTY OF HALKEY-ROBERTS CORPORATION ST. PETERSBURG, FL. ANY REPRODUCTION IN PART OR AS A WHOLE WITHOUT THE WRITTEN PERMISSION OF HALKEY-ROBERTS CORPORATION IS PROHIBITED.		SCALE 1:1	DO NOT SCALE DRAWING	
		SHEET 2 OF 2		